

SAE200
SAE140S



BTs concept using laser guided technology and teach-in programming allows driverless operation for repetitive movements of goods. Easy to install and easy to modify. BTs Autopilot will increase efficiency and save money.



Technical Details		SAE200	SAE140S
Rated capacity	kg	2000	1400
Load centre	mm	600	600
Weight without battery	kg	1065	1145
Max. axle load drive wheel, without/with rated load	kg	705/637	645/656
Max. axle load castor wheels, without/with rated load	kg	189/324	189/212
Max. axle load support arm wheels, without/with rated load	kg	172/1068	156/1060
Castor wheels, Vulkollan	mm	Ø 150x50	Ø 150x50
Drive wheel, Anti static, Vulkollan	mm	Ø 250x75	Ø 250x75
Support arm wheels, bogie/single, Vulkollan	mm	Ø 85x75/—	Ø 80x75/Ø 140x60
Travel speed, without/with 1000kg/with rated load	km/h	6/6/6	6/6/6
Lift speed fork, without/with rated load	m/s	0.10/0.07	0.10/0.07
Lowering speed fork, without/with rated load	m/s	0.05/0.19	0.04/0.11
Gradient, without/with rated load	%	11/8	11/8
Service-/parking brake		1 stage electromagnetic brake	
Drive motor/Intermittent rating	kW/%	2.5/60	2.5/60
Lift motor/Intermittent rating	kW/%	2.2/10	2.2/10
Steering system		manual/automatic	
Speed control, number of steps		stepless	
Steering arc	°	180	180

Dimensions, mm		SAE200	SAE140S
x	Front axle to fork face	786	756 ¹⁾ /678
h ₇	Platform height	230	230
h ₁₄	Height of handle in neutral pos.	1450	1450
h ₁₃	Height of lowered fork	91	45
h ₂₀	Total height with scanner	2362	2362
b ₁	Chassis, width	790	790
e	Fork width	180	180
l	Fork length	1200	1200
b ₅	Width across fork, min./max.	550/685	360—900
b ₄	Width between support arms, min./max.	190/325	1145/1300
b ₁₄	Width of support arm	—	85/130 ¹⁾
l ₄	Platform length	438	438
m ₁	Floor clearance	55	55

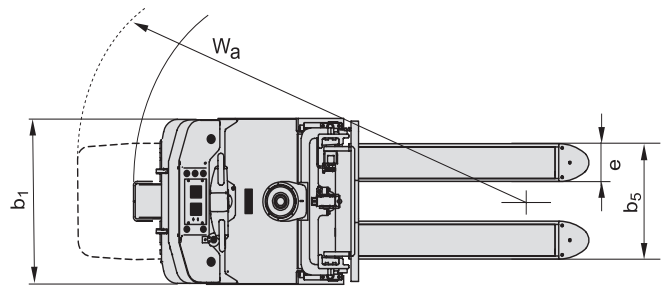
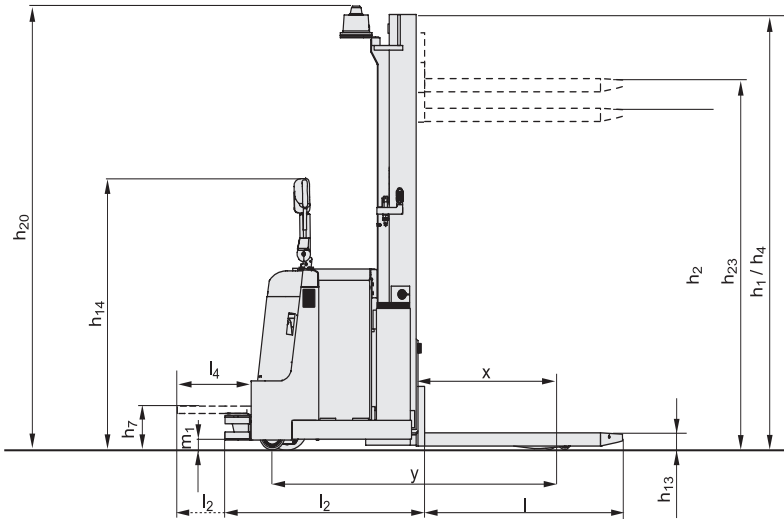
Data is based on small size battery compartment

Dimensions — Battery compartment		SAE200		SAE140S		
		Small	Medium	Small	Medium	
y	Wheel base	mm	1518	1604	1519 ¹⁾ /1440	1604 ¹⁾ /1526
A _{st}	Aisle width, min., platform up/down Pallet 800x1200 mm	mm	2506/2789	2592/2875	2531/2814	2617/2900
W _a	Turning radius, platform up/down	mm	1892/2175	1978/2261	1809/2092 ²⁾	1895/2178 ²⁾
l ₂	Truck length incl. back of fork, platform up/down	mm	1097/1380	1183/1466	1127/1410	1213/1496
	Battery capacity	Ah	450	600	450	600
	Voltage	V	24	24	24	24
	Battery weight	kg	380	500	380	500

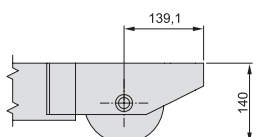
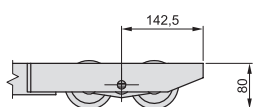
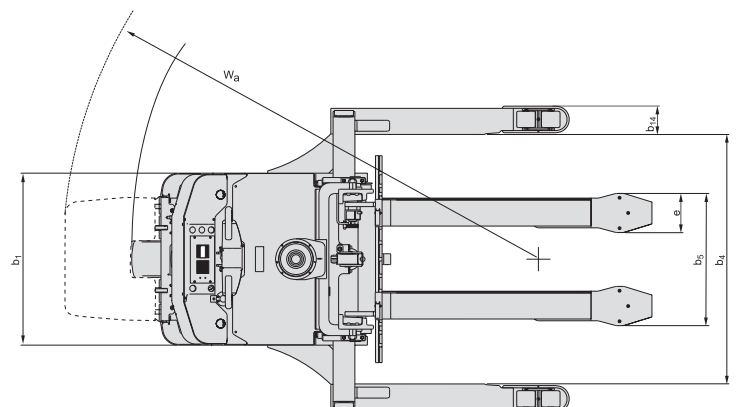
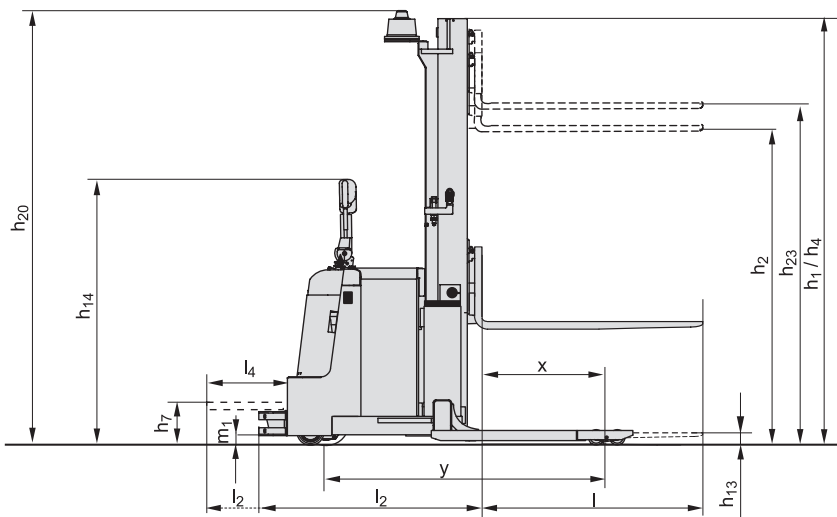
Mast, mm	SAE200 Simplex	SAE140S Simplex
h₂₃ Total lift height	1790	1740
h ₁ Height of mast, min.	2318	2318
h ₂ Free lift	1699	1699
h ₄ Height of mast, max.	2318	2318

- 1) Intermediate straddle / low profile straddle
2) Low profile straddle

SAE200



SAE140S





- The basic approach to Autopilot is simplicity and flexibility! Using a standard truck, giving it the capability to run in both manual as well as automatic mode.
- The Autopilot is based on a BT LPE240 Pallet Truck with Danaher components.
- The Teach-In system is used to program drive routes and different type of stations and events. The Autopilot routes are literally recorded while walking with the truck.
- The routes and load stations are memorized and stored in the on board computer, the layout can be transferred to other trucks and may be changed or updated quickly and easily.
- Autopilot can handle up to 112 orders in a standard setup.
- Autopilot has a personnel safety system. This system will create safety fields which are proportional to speed and steering angle, where it either will slow down or bring the truck to stop if a person or object is in the path.

Truck features	SAE200	SAE140S
Adjustable width over forks	—	S
BT Powerdrive System	S	S
Powertrak traction system	S	S
Straddle support arm version	—	S
Controls and instrument		
Fingertip controls	S	S
Power/Electronic steering	S	S
Tiller arm steering	S	S
Driving features		
Electronic braking system	S	S
Electronic regenerative brakes	S	S
Flip-down driver platform	S	S
Safety features		
Automatic parking brake	S	S
Clear-view mast	S	S
Emergency collision button	S	S
Emergency cut-off	S	S
Maintenance features		
Easy access for maintenance	S	S
Fault diagnosis facility	S	S
Historic fault log	S	S
Battery management features		
Battery change facility	S	S
Battery status indicator	S	S
Heavy duty battery compartments	S	S
Sideways battery change	S	S
Special applications		
Remote call system	O	O
Semi-automatic function	S	S
Traffic control	O	O

S = Standard feature

O = Optional feature

— = Not available